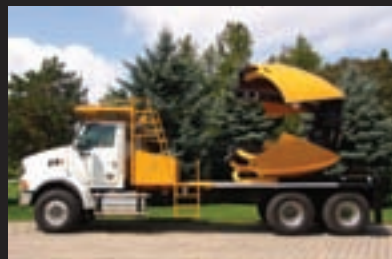




DUTCHMAN TRUCKSPADE

66" - 90" - 100"



www.dutchmantruckspade.com

1.800.293.0070



YOU ASKED AND WE LISTENED

After years of extensive research and field tests, Dutchman's 3rd generation truck spades are here.

Built with durability and longevity in mind, our truck spades are built through state-of-the-art manufacturing including engineered drawings and computerized stress tests.

SETTING THE STANDARD



REDUCED CYCLE TIME

The shorter towers allow an operator to travel with the blades up thereby eliminating a full "open-close" cycle. This will drastically speed up the digging process when moving several trees



HYDRAULIC GATE LOCK

By enabling a complete, solid lock, the frame will not open when pushing the blades into the ground. The lock will also prevent any overclosure when transporting empty



EXTRA WIDE OPENING

The circular frame allows for a greater opening which can easily wrap around low-branched or multi-stemmed trees. The low-profile frame can guide itself under low-branches when closing



COLD-FORMED BLADES

The ideal way to form a blade and maintain its original integrity is to cold-form the blade. The longevity of this type of blade will out-perform any other



LOCKING LIFT MAST

Our new lift-mast lock virtually eliminates any spade movement and makes traveling safer and far more comfortable.



SHORTER TOWERS

We accomplished this by using a two stage cylinder with the same power and speed as a straight blade cylinder, making our truck spades some of the shortest in the industry



FULL DECKING

Full decking covers the entire frame from the rear of the cab to the back of the spade frame which gives the operator the ability to climb on the frame to manage tree branches



CIRCULAR FRAME

The circular frame allows the operator more clearance around the tree without compensating the strength of the frame. The complete circular-frame increases the overall strength



EXTENDED BLADE SUPPORT

This type of support is designed with less deflection and increased penetration. It will lower the stress and torque that is created when the blades are forced into the ground.



Recommended Tree Trunk Diameter

7"	9"-10"	10"-12"
----	--------	---------

Rootball Weight

4,000 lbs	10,000 lbs	15,000 lbs
-----------	------------	------------

Rootball Depth

45"	56"	60"
-----	-----	-----

Overall Weight of Transplanter

9,500 lbs	13,500 lbs	19,500 lbs
-----------	------------	------------

Overall Width - closed

68"	92"	102"
-----	-----	------

Overall Height - blades up

96"	113"	124"
-----	------	------

Req'd. Truck Horse Power

300+	350+	400+
------	------	------

Req'd. Cab-to-Axle Length

120"+	156"+	186"+
-------	-------	-------

Required Truck GVW

12,000 front; 21,000 rear	18,000 front; 44,000 rear	20,000 front; 46,000 rear
---------------------------	---------------------------	---------------------------

Oil Reservoir Capacity - gallons

30	40	45
----	----	----

Preset Hydraulic Relief - psi

3200	3200	3500
------	------	------

Water Reservoir Capacity - gallons

no water req'd.	400	400
-----------------	-----	-----

1-800-293-0070 + INFO@DUTCHMANTRUCKSPADE.COM + WWW.DUTCHMANTRUCKSPADE.COM

www.dutchmantruckspade.com
1.800.293.0070